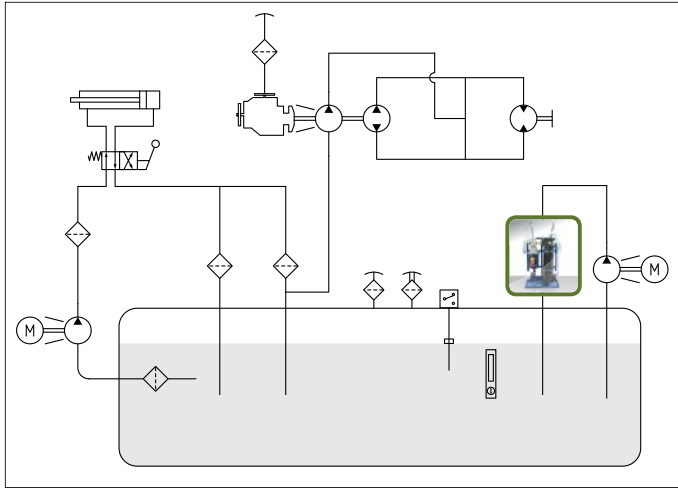


GTC



FILLING AND FILTRATION UNIT





GTC

Model GTC 040 T 0075 A3 XX

ELECTRIC MOTOR

three phase 380V - 0,75 Kw 1450 rpm IP54

GEAR PUMP

40 l/min with inbuilt relief valve 1MPa (10 bar)

INLET and OUTLET flexible hoses 2 m long,
with rigid ends 0,5 m long

“Y” type filter for pump protection

CLOGGING INDICATOR:

pressure gauge

(on request: differential indicator - see ROL brochure)



The filter element must be ordered separately:
type CRC340+++
(see the ROL brochure for technical features and ordering code).